

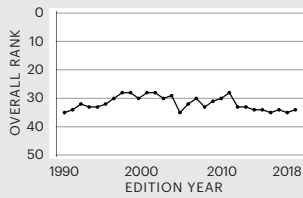
# Michigan

MICHIGAN

**OVERALL RANK:**  
**34**



Change: ▲ 1  
Determinants Rank: **30**  
Outcomes Rank: **39**



**Strengths:**

- High rate of primary care physicians
- Low incidence of *Salmonella*
- High meningococcal immunization coverage among adolescents

**Challenges:**

- High prevalence of smoking
- Low percentage of high school graduation
- High cardiovascular death rate

**Highlights:**

- In the past five years, children in poverty decreased 21% from 24.9% to 19.7% of children aged 0 to 17
- In the past five years, smoking decreased 17% from 23.3% to 19.3% of adults
- In the past seven years, the percentage uninsured decreased 59% from 13.0% to 5.3% of the population
- In the past 10 years, drug deaths increased 106% from 10.1 to 20.8 deaths per 100,000 population
- In the past two years, primary care physicians increased 7% from 187.5 to 200.9 per 100,000 population
- In the past four years, premature death increased 7% from 7,574 to 8,102 years lost before age 75 per 100,000 population

**Ranking:**

Michigan is 34th this year; it was 35th in 2017. The state ranks 27th for senior health and 32nd for the health of women and children.

**State Health Department Website:**  
[www.michigan.gov/mdhhs](http://www.michigan.gov/mdhhs)

	Rating	2018 Value	2018 Rank	No. 1 State
<b>Behaviors</b>				
Drug Deaths (deaths per 100,000 population)	++	20.8	35	6.8
Excessive Drinking (% of adults)	++	19.6	32	12.2
High School Graduation (% of students)	++	79.7	40	91.3
Obesity (% of adults)	++	32.3	32	22.6
Physical Inactivity (% of adults)	+++	27.2	29	19.2
Smoking (% of adults)	++	19.3	37	8.9
<b>Behaviors Total*</b>	<b>+</b>	<b>-0.139</b>	<b>43</b>	<b>0.301</b>

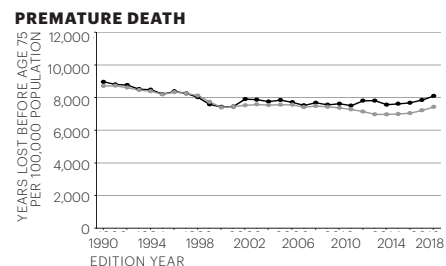
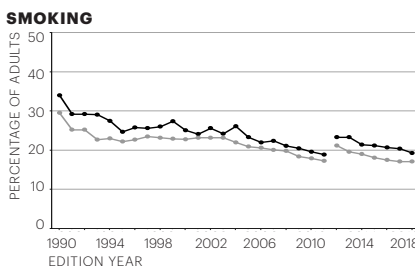
	Rating	2018 Value	2018 Rank	No. 1 State
<b>Community &amp; Environment</b>				
Air Pollution (micrograms of fine particles per cubic meter)	++	8.3	36	4.5
Children in Poverty (% of children)	++	19.7	33	10.3
Infectious Disease (mean z score of chlamydia, pertussis and <i>Salmonella</i> )*	+++++	-0.457	10	-1.017
Chlamydia (cases per 100,000 population)	+++	462.9	21	260.6
Pertussis (cases per 100,000 population)	+++	4.2	23	0.2
<i>Salmonella</i> (cases per 100,000 population)	+++++	10.6	5	6.8
Occupational Fatalities (deaths per 100,000 workers)	+++++	4.3	17	2.5
Violent Crime (offenses per 100,000 population)	++	450	37	121
<b>Community &amp; Environment Total*</b>	<b>++</b>	<b>-0.005</b>	<b>31</b>	<b>0.305</b>

	Rating	2018 Value	2018 Rank	No. 1 State
<b>Policy</b>				
Immunizations—Adolescents (mean z score of HPV, meningococcal and Tdap)*	+++++	0.908	5	1.518
HPV Females (% of females aged 13 to 17 years)	++++	60.4	14	76.8
HPV Males (% of males aged 13 to 17 years)	++++	48.5	19	78.4
Meningococcal (% of adolescents aged 13 to 17 years)	+++++	93.5	5	95.3
Tdap (% of adolescents aged 13 to 17 years)	+++++	93.4	6	96.2
Immunizations—Children (% of children aged 19 to 35 months)	+++	69.9	29	82.1
Public Health Funding (dollars per person)	+	\$58	41	\$281
Uninsured (% of population)	+++++	5.3	8	2.7
<b>Policy Total*</b>	<b>++++</b>	<b>0.061</b>	<b>15</b>	<b>0.201</b>

	Rating	2018 Value	2018 Rank	No. 1 State
<b>Clinical Care</b>				
Dentists (number per 100,000 population)	++++	61.2	16	82.7
Low Birthweight (% of live births)	+++	8.5	30	5.9
Mental Health Providers (number per 100,000 population)	++++	253.0	19	590.9
Preventable Hospitalizations (discharges per 1,000 Medicare enrollees)	++	55.4	39	23.3
Primary Care Physicians (number per 100,000 population)	+++++	200.9	6	264.5
<b>Clinical Care Total*</b>	<b>++++</b>	<b>0.018</b>	<b>20</b>	<b>0.185</b>
<b>All Determinants*</b>	<b>+++</b>	<b>-0.065</b>	<b>30</b>	<b>0.718</b>

	Rating	2018 Value	2018 Rank	No. 1 State
<b>Outcomes</b>				
Cancer Deaths (deaths per 100,000 population)	++	203.0	38	150.4
Cardiovascular Deaths (deaths per 100,000 population)	+	297.8	42	190.3
Diabetes (% of adults)	++	11.0	32	7.1
Disparity in Health Status (% difference by high school education)	++++	25.5	14	13.1
Frequent Mental Distress (% of adults)	++	13.5	34	9.2
Frequent Physical Distress (% of adults)	+	14.8	43	9.2
Infant Mortality (deaths per 1,000 live births)	++	6.5	33	3.9
Premature Death (years lost before age 75 per 100,000 population)	++	8,102	34	5,653
<b>All Outcomes*</b>	<b>++</b>	<b>-0.130</b>	<b>39</b>	<b>0.283</b>
<b>OVERALL*</b>	<b>++</b>	<b>-0.194</b>	<b>34</b>	<b>0.882</b>

\* Value indicates z score. Negative scores are below U.S. value; positive scores are above U.S. value. For complete definitions of measures including data sources and years, see Table 5.



State —◆— Nation —●— The 2012–2018 data in the smoking graph is not directly comparable with prior years.